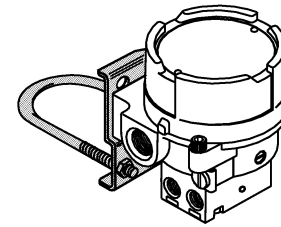
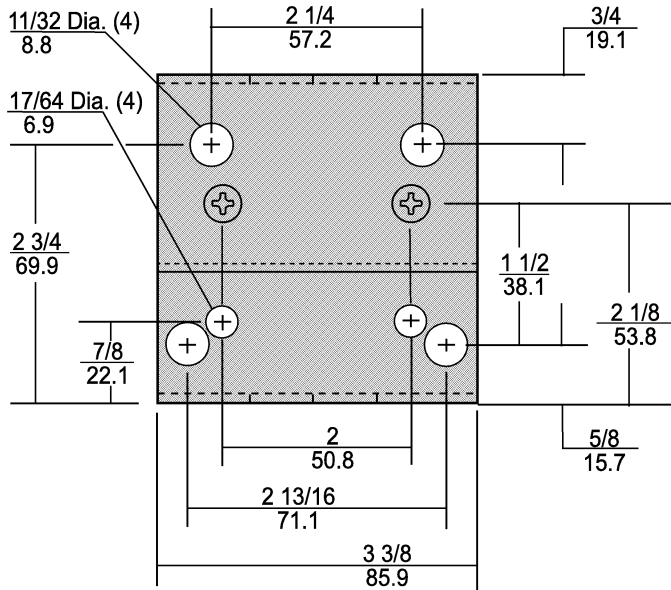


**Installation (continued)**

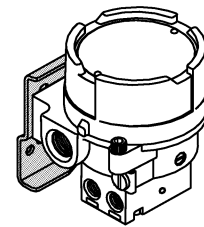
A Mounting Kit is available to mount the TXI7800 on a flat surface or on a 2" pipe. For more information, see Figure 2.

**ATEX Directive- Special Conditions for Safe Use**

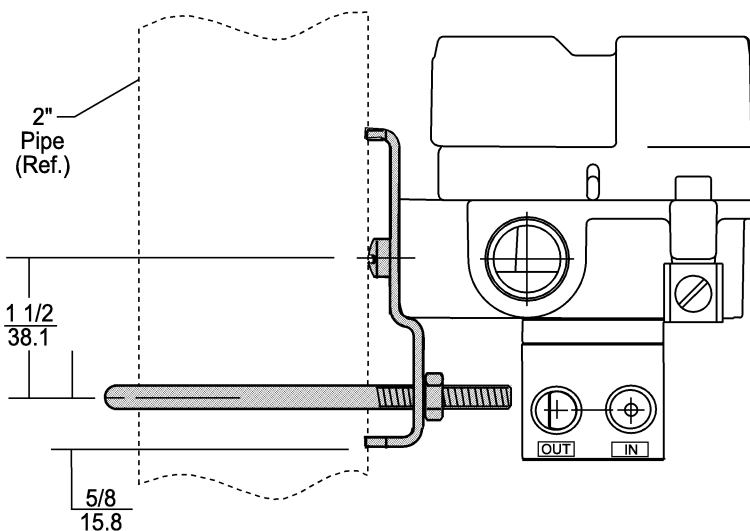
The enclosure is manufactured from aluminum alloy. In rare cases, ignition sources due to impact and friction sparks could occur. This shall be considered when the equipment is installed in locations that specifically require Group II, category 1G equipment.



**2" Pipe Mounting Configuration**

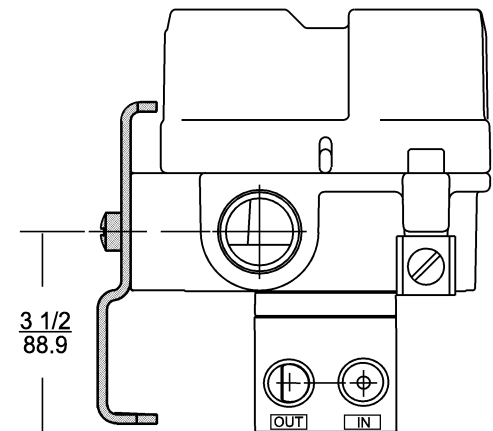


**Panel / Wall Mounting Configuration**



**Mounting Kit EA-19021-1**

- Includes:  
 One Stainless Steel Mounting Bracket  
 Two 1/4-20 x 7/16" Screws  
 One 2" Pipe Clamp



**For "U" option BSPT Mounting Kit EA-19021-2**

- Includes:  
 One Stainless Steel Mounting Bracket  
 Two M6 x 12 mm Screws  
 One 2" Pipe Clamp

**Figure 2. Mounting Kit 19021-1 (sold separately)**

## Pneumatic Connections

Clean all pipelines to remove dirt and scale before installation.

Apply a minimum amount of pipe compound to the male threads of the fitting only. **Do not use teflon tape as a sealant.** Start with the third thread back and work away from the end of the fitting to avoid the possibility of contaminating the transducer. Install the transducer in the air line.

The inlet and outlet ports are labeled on the side of the transducer. Tighten connections securely. Avoid undersized fittings that limit the flow through the transducer and cause a pressure drop downstream. For more information, see Figure 1.

**NOTES:** Instrument quality air, per ISA Standards S7.3-1981, is required. Use a filter to remove dirt and liquid in the air line ahead of the transducer. If an air line lubricator is used, it **MUST** be located downstream to avoid interference with the transducer.

The user is responsible for insuring that the environment in which the unit is installed and the operating gas are compatible with the materials in the transducer.

## Electrical Connections

Make connections to the Terminal Block through the 1/2-14 NPT Conduit Port in the base of the housing. For more information, see Figure 3.

### Wiring in Hazardous Areas

Wiring in hazardous areas should comply with the codes in Table 1 and with any local codes that apply.

Country	Agency	Code
U.S.	FM	ANSI/ISA RP 12.6, ANSI/NFPA 70
Canada	CSA	CEC Part 1
Europe	ATEX	EN 50 039, EN 60079-14, IEC 60079-14
Australia	SAA	AS/NZS 3000, AS2381.1

### Intrinsically Safe Connections

For more information, see the latest revision of the drawings listed in Table 2.

Underwriting Group	Drawing Number
FM (Factory Mutual)	EC-18970
CSA (Canadian Standards Assoc.)	EC-18971
ATEX	EC-18972
SAA (Standard Australia Assoc.)	ED-19271

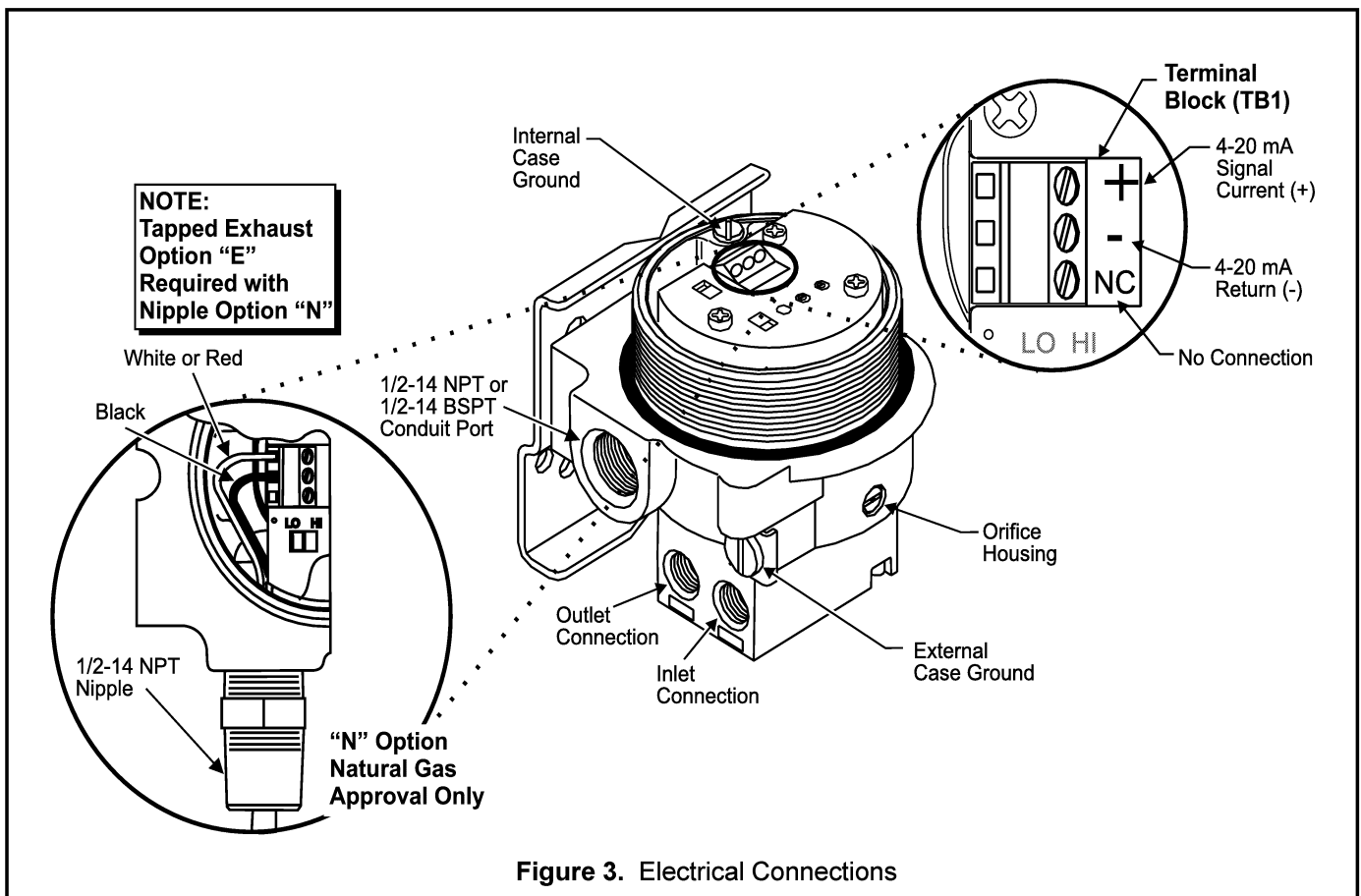
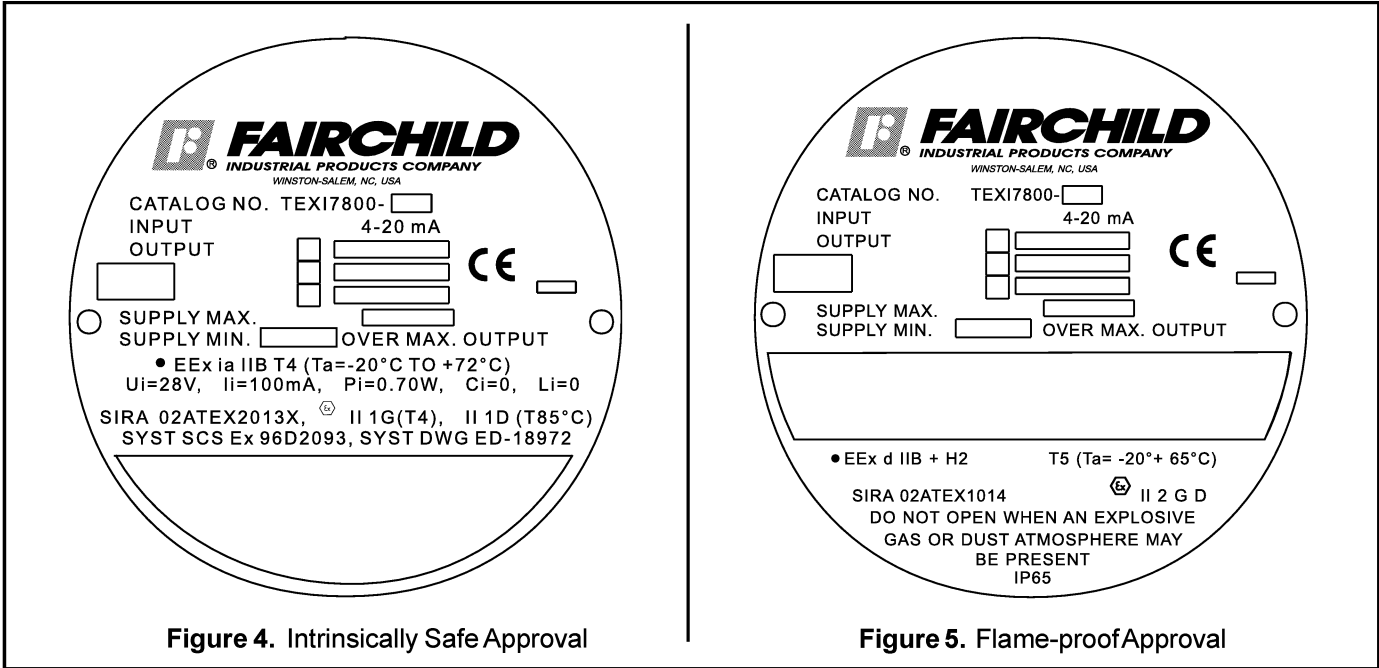


Figure 3. Electrical Connections

**HAZARDOUS AREA SPECIFICATIONS**

**ATEX Directive Nameplates**



**LEGAL NOTICE:**

The information set forth in the foregoing Installation Instructions shall not be modified or amended in any respect without prior written consent of Fairchild Industrial Products Company. In addition, the information set forth herein shall be furnished with each product sold incorporating Fairchild's unit as a component thereof.



ISO 9001:2000  
FM NO. 25571

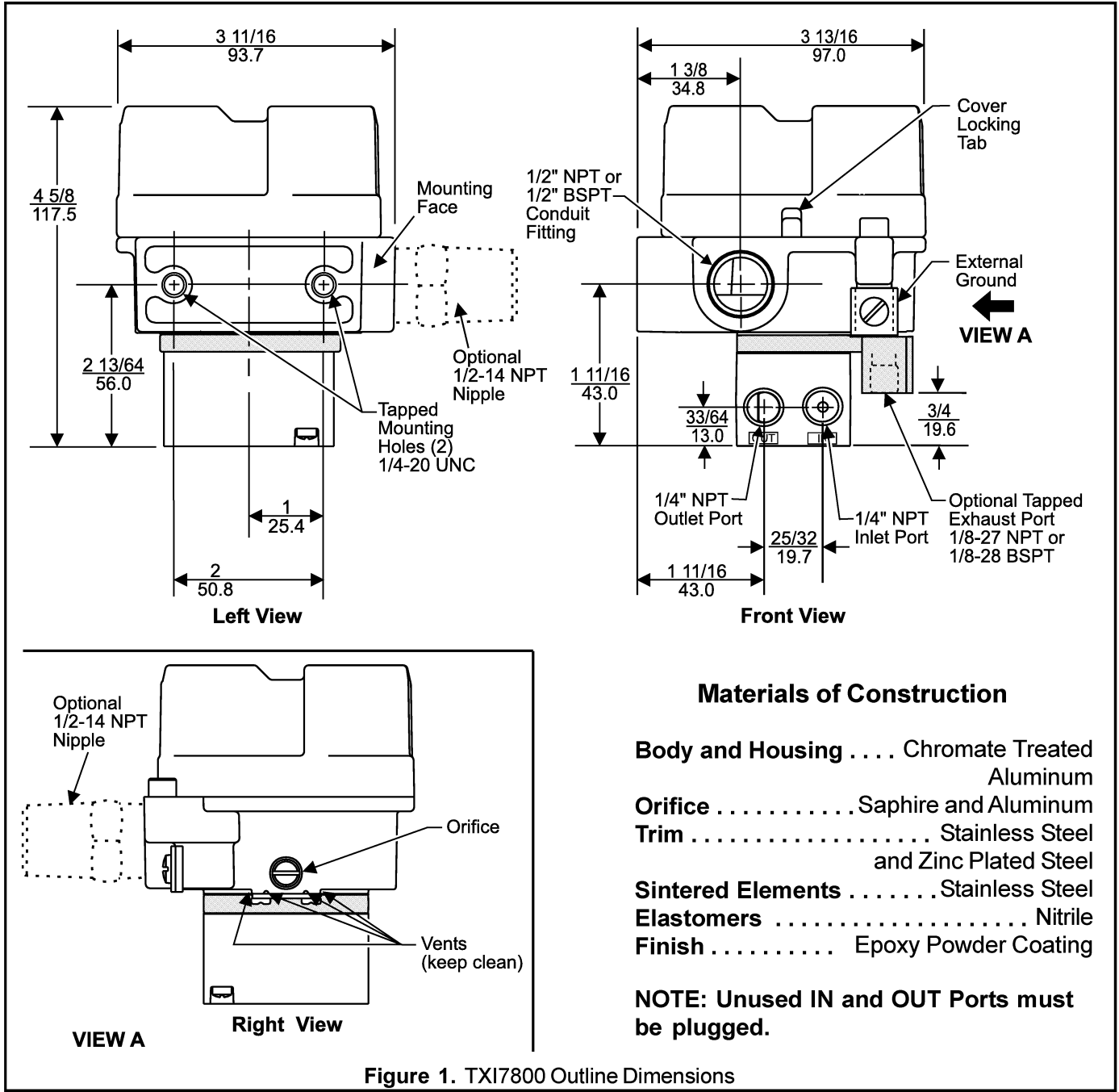
[www.fairchildproducts.com](http://www.fairchildproducts.com)

II-5TXI7800  
Litho in USA  
Rev. D 9/04

# FAIRCHILD TXI7800

## EXPLOSION-PROOF I/P TRANSDUCER

### Installation Instructions



#### INSTALLATION

You can mount the Model TXI7800 directly on a flat surface using the two tapped mounting holes in the mounting face of the housing. For more information, see Figure 1.

#### TCXI7800, TEXI7800, TFXI7800 Installation with the "N" Option

**NOTE: For Hazardous Location in Potentially Explosive Atmosphere Installations**

1. Tapped exhaust required for installations in Class I, Division 2/Zone 2 (European Union) classified locations with Group D/Group IIA (European Union) gases such as Natural Gas and Methane-Industrial as the pressure supply medium.
2. The explosion-proof pipe nipple seal (N option) supplied with this unit is an integral component of the design safety of this version and must not be removed. Use caution to avoid marring the threads on the pipe nipple which voids the explosion-proof integrity of the device.
3. Gases used as the pressure supply medium in hazardous location applications must be compatible with the elastomer indicated in Materials of Construction.

#### Materials of Construction

**Body and Housing** . . . . Chromate Treated Aluminum

**Orifice** . . . . . Sapphire and Aluminum

**Trim** . . . . . Stainless Steel and Zinc Plated Steel

**Sintered Elements** . . . . . Stainless Steel

**Elastomers** . . . . . Nitrile

**Finish** . . . . . Epoxy Powder Coating

**NOTE: Unused IN and OUT Ports must be plugged.**